

Suspended luminaire/light run - Micro-prismatic diffuser - direct/indirect distribution

Sheet steel housing in square design; prepared for fixing of die-cast aluminium end faces or luminaire connectors made of steel; Housing colour silver grey/white aluminium RAL 9006; Homogeneous direct/indirect light distribution for standard-compliant VDU suitability in accordance with DIN EN 12464-1; glare reduction through microprism diffuser with special "multilayer" technology and optimised light deflecting foil; Electrical connection via 5-pole connection terminal with plug-in contacts. Including through-wiring. Required accessories: order face ends, connectors, through-wiring and Y-wire suspensions SAY-KS/SAYE-KL and a height-adjustable suspension set with a canopy and an integrated light control with a 1900 mm suspension length separately according to luminaire arrangements. A homogeneous appearance of the lighting is guaranteed by the use of standard luminous flux variants with light run application. If building-related circumstances make different luminaire lengths necessary, the use of the 1200mm variant as start and end luminaire is recommended.

CHARACTERISTICS

Order number	60513026695
EAN number	4020863319251
Commodity code	94051190
Certification mark	IP 20, Protection class I, VDU 65° < 3000, F, Indoor, CE
Impact resistance (IK rating)	IK02
Ambient temperatur	ta 25°C
Special properties	Ready for IoT
Warranty period	5 years
State funding programs	BEG - Federal funding for efficient buildings (valid only for Germany)

ELECTRICAL ENGINEERING

Controller	Electronic driver DALI2 (2 pcs.)
Wiring	5x1.5mm ²
System output	64W
Mains voltage	230V/50Hz
Circuit breakers (inrush current)	13 pieces/B10, 24 pieces/B16, 25 pieces/C10, 40 pieces/C16
Energy efficiency class/light source	C

LIGHTING TECHNOLOGY

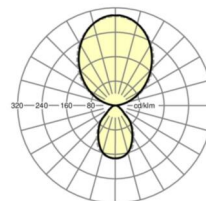
Placement	LED, Colour rendering/Light colour CRI ≥ 80 / 4000K
Colour tolerance (MacAdam)	3SDCM
Photobiological safety (Luminaire)	RGO
Nominal luminous flux	8565lm
LED service life	50000h L80/B10 (Tq 25°C)
Luminaire luminous efficiency	133lm/W

MECHANICS

Housing colour	silver grey/white aluminium RAL 9006
Dimensions (LxWxDxH)	1408mm x 85mm x 72mm
Weight (net)	3.8kg
Type of installation	Pendant individual mounting, Pendant light strip mounting

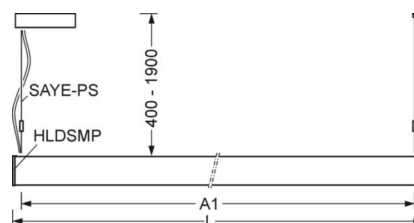
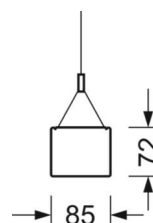
DEEP-LINK

<https://www.regiolux.de/en/article/60513026695>



Reference
η_{LB}
Φ ↓/↑
VDU

LED 8600lm 840
100 %
28 % / 72 %
65° < 3000cd/m²



Dimensions

L	1408 mm	Length
B	85 mm	Width
H	72 mm	Height
A1	1350 mm	Mounting distance single mounting
A2	1380 mm	Mounting distance 1st luminaire of the light run
A3	1408 mm	Mounting distance between luminaires in a light run arrangement
P min	400 mm	Minimum suspension length
P max	1900 mm	Maximum suspension length

